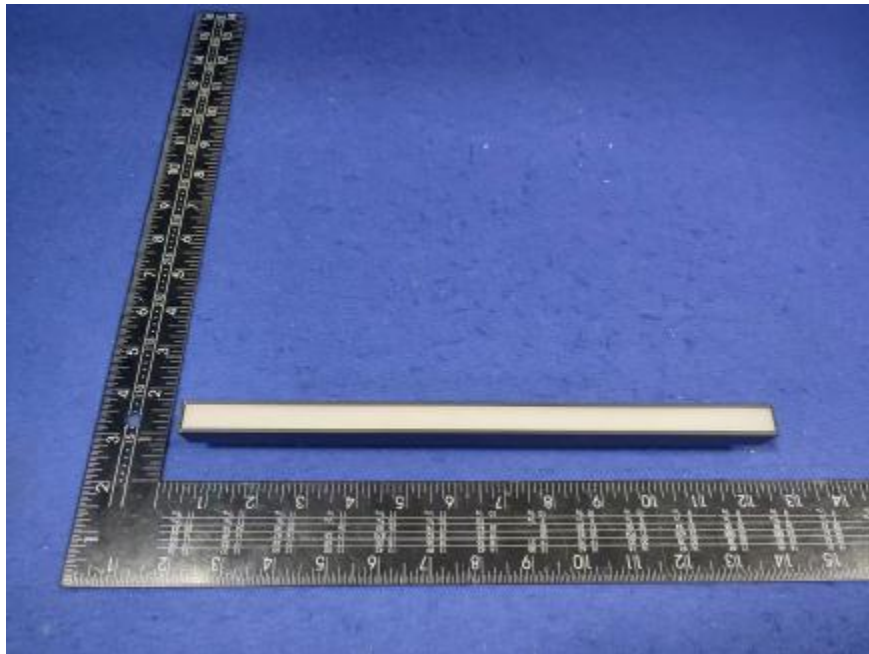


## Luminaire Photograph



Light Output Ratio:	48.7%	
Luminaire Power:	5.356 W	
SHR Nominal:	1.25	Calculated using the TM5
SHR Maximum:	1.35	fine grid method.

C Range: 0 - 360DEG  
C Interval: 30.0DEG  
Test Speed: HIGH  
Temperature: 25.3 °C  
Operators: zoe  
Test Date: 2024-12-26

γ Range: 0 - 180DEG  
γ Interval: 1.0DEG  
Test System: EVERFINE GO-SPEX500\_V1 SYSTEM V2.00.461  
Humidity: 65.0%  
Test Distance: 3.160m [K=1.0000]  
Remarks: LAMP: HL-A-2835D90W-2-S1-08L-HR5 Ra:90  
DIFFUSER: PL-0101A+PM-0145A  
NOT DRIVER: 48V  
30minutes warm-up

## LUMINOUS INTENSITY DISTRIBUTION DIAGRAM

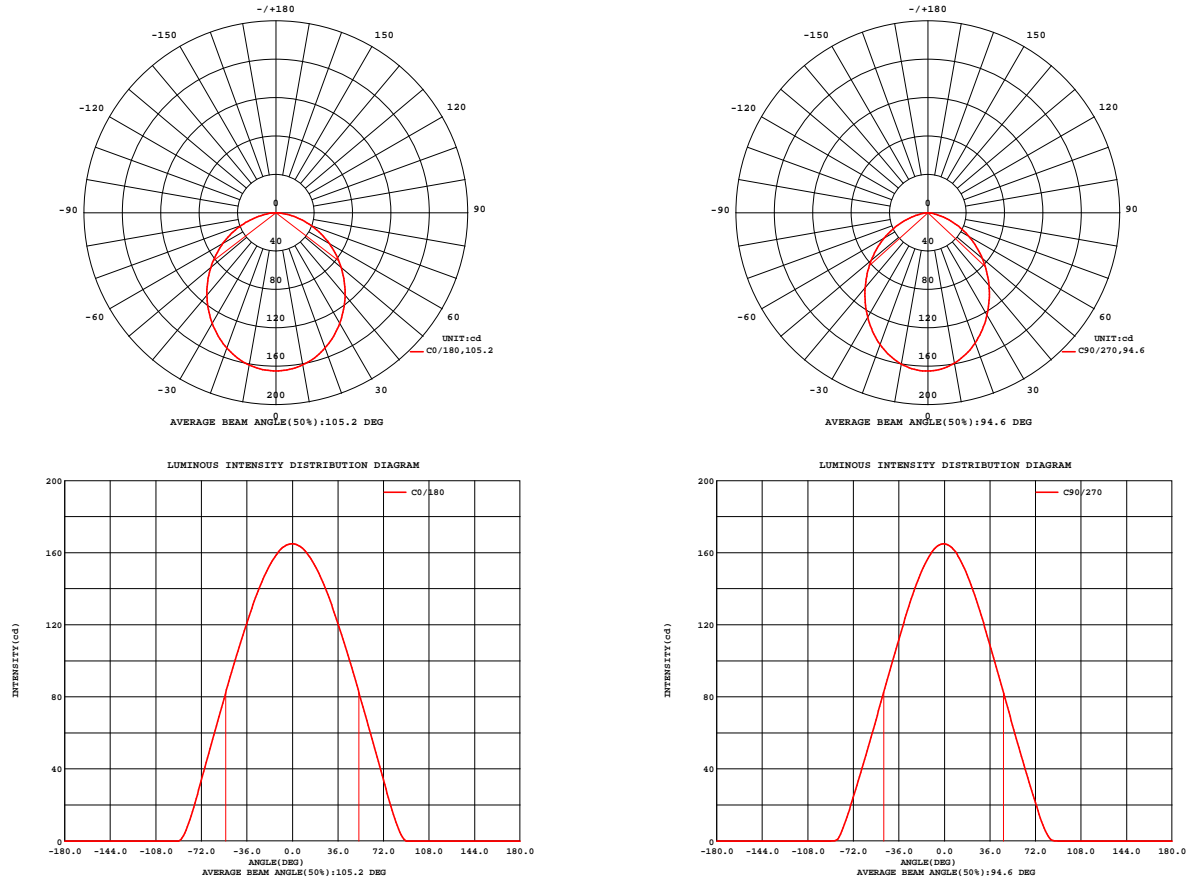


Fig. C0/C180

Fig. C90/C270

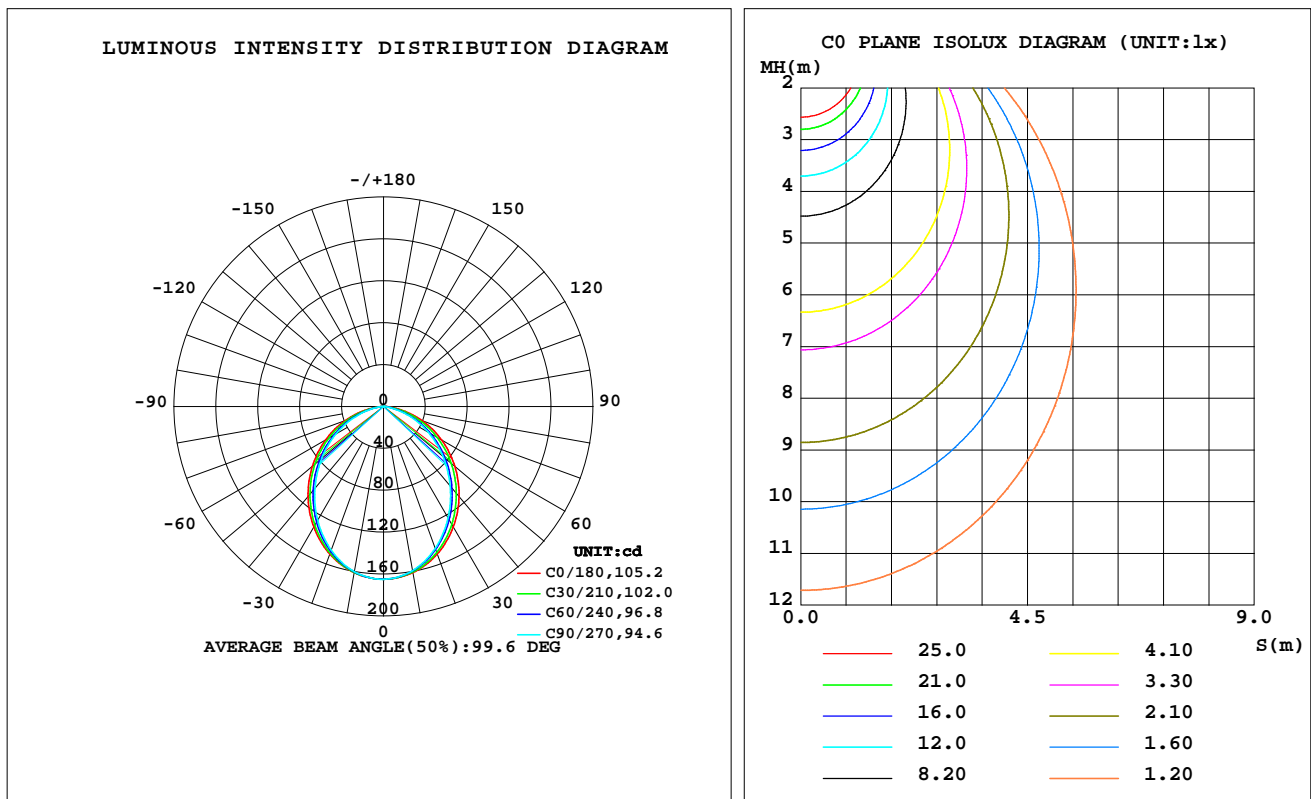
C Range: 0 - 360DEG  
C Interval: 30.0DEG  
Test Speed: HIGH  
Temperature: 25.3 °C  
Operators: zoe  
Test Date: 2024-12-26

$\gamma$  Range: 0 - 180DEG  
 $\gamma$  Interval: 1.0DEG  
Test System: EVERFINE GO-SPEX500\_V1 SYSTEM V2.00.461  
Humidity: 65.0%  
Test Distance: 3.160m [K=1.0000]  
Remarks: LAMP: HL-A-2835D90W-2-S1-08L-HR5 Ra: 90  
DIFFUSER: PL-0101A+PM-0145A  
NOT DRIVER: 48V  
30minutes warm-up

## LUMINAIRE PHOTOMETRIC TEST REPORT

Test:U:47.997V I:0.1116A P:5.3565W PF:1.0000 Freq:0Hz Lamp Flux:823.228x1 lm		
NAME: OZ48-P2-3	TYPE:	WEIGHT:
SPEC.: 3000K	DIM.:	SERIAL No.: 2412261526
MFR.: RISE	SUR.: 0.004998m2	Shielding Angle:

DATA OF LAMP		PHOTOMETRIC DATA Eff: 74.86 lm/W			
MODEL	HONGLI	Imax(cd)	164.9	S/MH(C0/180)	1.21
NOMINAL POWER(W)	5	LOR(%)	48.7	S/MH(C90/270)	1.15
RATED VOLTAGE(V)	48	TOTAL FLUX(lm)	400.96	$\eta$ UP,DN(C0-180)	0.0,24.0
NOMINAL FLUX(lm)	823.228	CIE CLASS	DIRECT	$\eta$ UP,DN(C180-360)	0.0,24.7
LAMPS INSIDE	1	$\eta$ up(%)	0.0	CIBSE SHR NOM	1.25
TEST VOLTAGE(V)	48	$\eta$ down(%)	48.7	CIBSE SHR MAX	1.35



C Range: 0 - 360DEG  
C Interval: 30.0DEG  
Test Speed: HIGH  
Temperature:25.3℃  
Operators:zoe  
Test Date:2024-12-26

$\gamma$  Range: 0 - 180DEG  
 $\gamma$  Interval: 1.0DEG  
Test System:EVERFINE GO-SPEX500\_V1 SYSTEM V2.00.461  
Humidity:65.0%  
Test Distance:3.160m [K=1.0000]  
Remarks: LAMP:HL-A-2835D90W-2-S1-08L-HR5 Ra:90  
DIFFUSER:PL-0101A+PM-0145A  
NOT DRIVER:48V  
30minutes warm-up

## ZONAL FLUX DIAGRAM

### ZONAL FLUX DIAGRAM:

$\gamma$	C0	C45	C90	C135	C180	C225	C270	C315	$\gamma$	$\Phi$ zone	$\Phi$ total	%lum,lamp
10	161.0	160.0	159.2	160.0	161.2	160.7	160.2	160.8	0- 10	15.52	15.52	3.87,1.89
20	150.0	146.9	144.3	146.9	150.1	148.2	146.2	148.4	10- 20	43.62	59.15	14.8,7.18
30	133.1	127.7	123.3	127.7	133.1	129.5	125.7	129.8	20- 30	63.86	123.0	30.7,14.9
40	112.2	105.0	99.18	104.9	112.2	107.0	102.0	107.5	30- 40	73.62	196.6	49,23.9
50	88.92	80.60	74.22	80.48	88.73	82.71	77.20	83.35	40- 50	72.64	269.3	67.2,32.7
60	64.28	55.73	49.46	55.53	63.92	57.78	52.49	58.57	50- 60	62.18	331.4	82.7,40.3
70	38.98	31.14	25.75	30.79	38.44	32.95	28.58	33.81	60- 70	44.22	375.7	93.7,45.6
80	14.63	8.990	5.614	8.650	13.98	10.13	7.448	10.89	70- 80	21.89	397.6	99.2,48.3
90	0	0	0	0	0	0	0	0	80- 90	3.405	401.0	100,48.7
100	0	0	0	0	0	0	0	0	90-100	0	401.0	100,48.7
110	0	0	0	0	0	0	0	0	100-110	0	401.0	100,48.7
120	0	0	0	0	0	0	0	0	110-120	0	401.0	100,48.7
130	0	0	0	0	0	0	0	0	120-130	0	401.0	100,48.7
140	0	0	0	0	0	0	0	0	130-140	0	401.0	100,48.7
150	0	0	0	0	0	0	0	0	140-150	0	401.0	100,48.7
160	0	0	0	0	0	0	0	0	150-160	0	401.0	100,48.7
170	0	0	0	0	0	0	0	0	160-170	0	401.0	100,48.7
180	0	0	0	0	0	0	0	0	170-180	0	401.0	100,48.7
DEG	LUMINOUS INTENSITY:cd									UNIT:lm		

C Range: 0 - 360DEG  
C Interval: 30.0DEG  
Test Speed: HIGH  
Temperature:25.3℃  
Operators:zoe  
Test Date:2024-12-26

$\gamma$  Range: 0 - 180DEG  
 $\gamma$  Interval: 1.0DEG  
Test System:EVERFINE GO-SPEX500\_V1 SYSTEM V2.00.461  
Humidity:65.0%  
Test Distance:3.160m [K=1.0000]  
Remarks: LAMP:HL-A-2835D90W-2-S1-08L-HR5 Ra:90  
DIFFUSER:PL-0101A+PM-0145A  
NOT DRIVER:48V  
30minutes warm-up

### LUMINANCE LIMITATION CURVES

Test:U:47.997V I:0.1116A P:5.3565W PF:1.0000 Freq:0Hz  
Lamp Flux:823.228x1 lm

NAME: OZ48-P2-3

TYPE:

WEIGHT:

SPEC.: 3000K

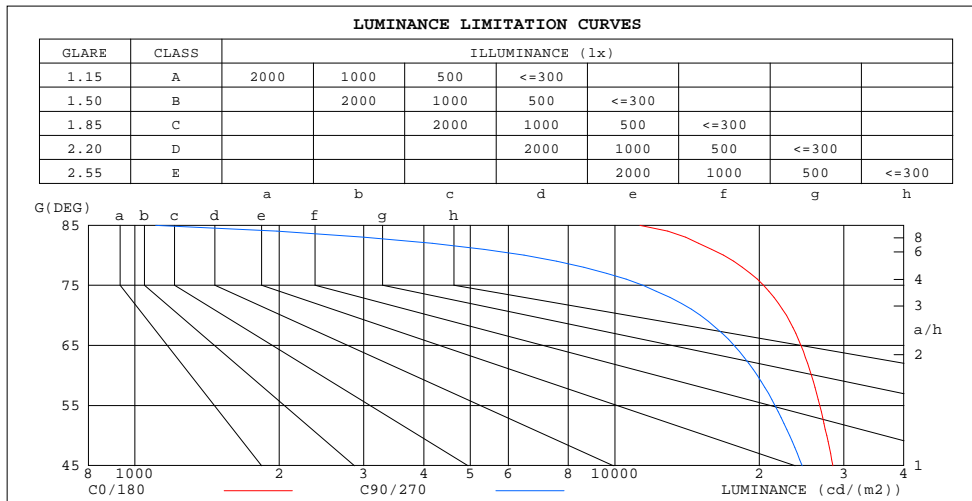
DIM.:

SERIAL No.: 2412261526

MFR.: RISE

SUR.: 0.004998m2

Shielding Angle:



LUMINANCE cd/(m2)		
G(180)	C0/180	C90/270
85	11276	1106
80	16836	6475
75	20404	11430
70	22771	15076
65	24426	17718
60	25684	19812
55	26716	21569
50	27639	23124
45	28478	24552

C Range: 0 - 360DEG  
C Interval: 30.0DEG  
Test Speed: HIGH  
Temperature:25.3℃  
Operators:zoe  
Test Date:2024-12-26

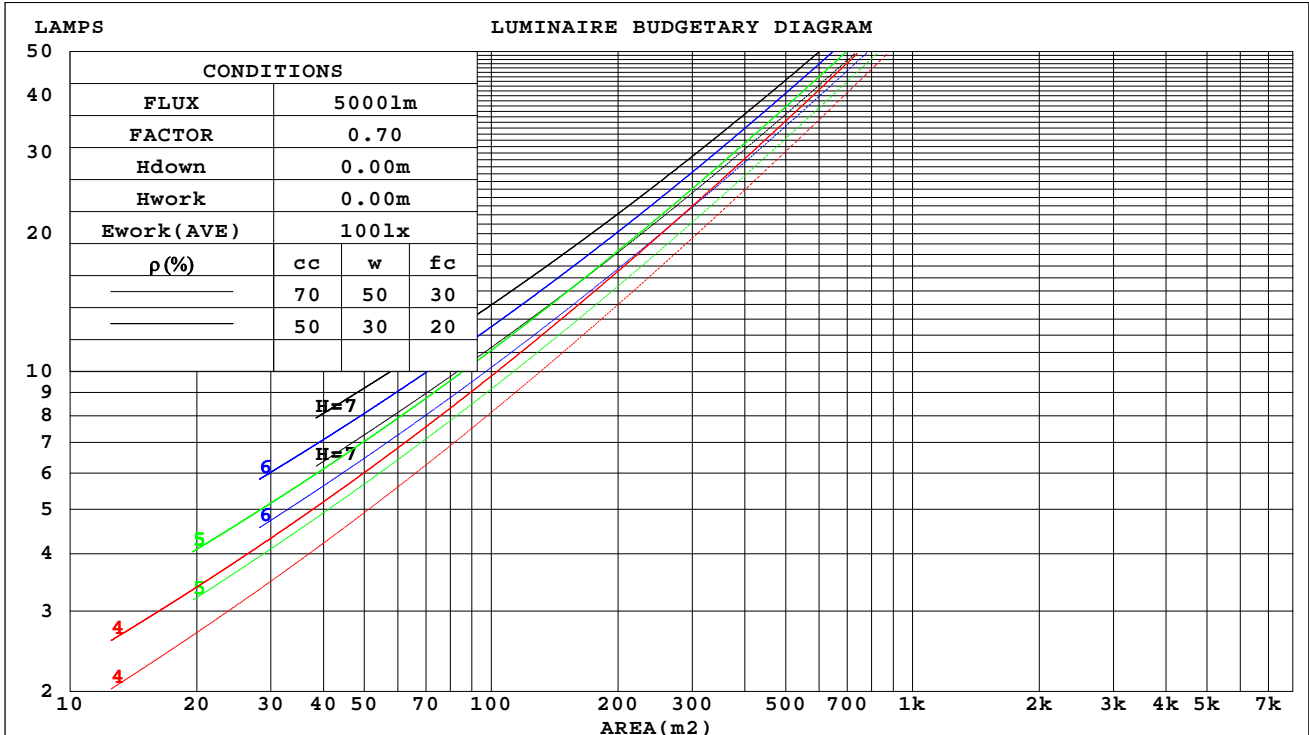
γ Range: 0 - 180DEG  
γ Interval: 1.0DEG  
Test System:EVERFINE GO-SPEX500\_V1 SYSTEM V2.00.461  
Humidity:65.0%  
Test Distance:3.160m [K=1.0000]  
Remarks: LAMP:HL-A-2835D90W-2-S1-08L-HR5 Ra:90  
DIFFUSER:PL-0101A+PM-0145A  
NOT DRIVER:48V  
30minutes warm-up

## CU AND LUMINAIRE BUDGETARY ESTIMATE DIAGRAM

Test:U:47.997V I:0.1116A P:5.3565W PF:1.0000 Freq:0Hz  
Lamp Flux:823.228x1 lm

NAME: OZ48-P2-3	TYPE:	WEIGHT:
SPEC.: 3000K	DIM.:	SERIAL No.: 2412261526
MFR.: RISE	SUR.: 0.004998m2	Shielding Angle:

$\rho_{cc}$	80%			70%			50%			30%			10%			0
$\rho_w$	50%	30%	10%	50%	30%	10%	50%	30%	10%	50%	30%	10%	50%	30%	10%	0
$\rho_{fc}$	20%			20%			20%			20%			20%			0
RCR	RCR:Room Cavity Ratio						Coefficients of Utilization(CU)									
0.0	.58	.58	.58	.57	.57	.57	.54	.54	.54	.52	.52	.52	.50	.50	.50	.49
1.0	.51	.49	.48	.50	.48	.47	.48	.47	.45	.46	.45	.44	.44	.43	.43	.42
2.0	.45	.42	.39	.44	.41	.39	.42	.40	.38	.41	.39	.37	.39	.38	.36	.35
3.0	.40	.36	.33	.39	.35	.33	.38	.35	.32	.36	.34	.31	.35	.33	.31	.30
4.0	.35	.31	.28	.35	.31	.28	.34	.30	.28	.32	.29	.27	.31	.29	.27	.26
5.0	.32	.27	.24	.31	.27	.24	.30	.27	.24	.29	.26	.24	.28	.26	.23	.22
6.0	.29	.24	.21	.28	.24	.21	.27	.24	.21	.26	.23	.21	.26	.23	.21	.20
7.0	.26	.22	.19	.26	.22	.19	.25	.21	.19	.24	.21	.19	.24	.21	.18	.18
8.0	.24	.20	.17	.23	.20	.17	.23	.19	.17	.22	.19	.17	.22	.19	.17	.16
9.0	.22	.18	.15	.22	.18	.15	.21	.18	.15	.21	.17	.15	.20	.17	.15	.14
10.0	.20	.16	.14	.20	.16	.14	.20	.16	.14	.19	.16	.14	.19	.16	.14	.13



C Range: 0 - 360DEG  
C Interval: 30.0DEG  
Test Speed: HIGH  
Temperature:25.3℃  
Operators:zoe  
Test Date:2024-12-26

$\gamma$  Range: 0 - 180DEG  
 $\gamma$  Interval: 1.0DEG  
Test System:EVERFINE GO-SPEX500\_V1 SYSTEM V2.00.461  
Humidity:65.0%  
Test Distance:3.160m [K=1.0000]  
Remarks: LAMP:HL-A-2835D90W-2-S1-08L-HR5 Ra:90  
DIFFUSER:PL-0101A+PM-0145A  
NOT DRIVER:48V  
30minutes warm-up

### WEC AND CCEC

Test:U:47.997V I:0.1116A P:5.3565W PF:1.0000 Freq:0Hz Lamp Flux:823.228x1 lm		
NAME: OZ48-P2-3	TYPE:	WEIGHT:
SPEC.: 3000K	DIM.:	SERIAL No.: 2412261526
MFR.: RISE	SUR.: 0.004998m2	Shielding Angle:

pcc	80%			70%			50%			30%			10%			0
pw	50%	30%	10%	50%	30%	10%	50%	30%	10%	50%	30%	10%	50%	30%	10%	0
pfc	20%			20%			20%			20%			20%			0
RCR	RCR:Room Cavity Ratio						Wall Exitance Coefficients(WEC)									
0.0																
1.0	.139	.079	.025	.136	.077	.025	.129	.074	.024	.123	.071	.023	.118	.068	.022	
2.0	.133	.073	.022	.130	.072	.022	.125	.069	.022	.119	.067	.021	.115	.065	.020	
3.0	.125	.066	.020	.122	.065	.020	.117	.063	.019	.112	.062	.019	.108	.060	.019	
4.0	.116	.060	.018	.114	.059	.018	.109	.058	.017	.105	.056	.017	.101	.055	.017	
5.0	.108	.055	.016	.106	.054	.016	.102	.053	.016	.098	.052	.015	.095	.051	.015	
6.0	.100	.050	.014	.099	.050	.014	.095	.049	.014	.092	.048	.014	.089	.047	.014	
7.0	.094	.046	.013	.092	.046	.013	.089	.045	.013	.086	.044	.013	.083	.043	.013	
8.0	.088	.043	.012	.086	.043	.012	.084	.042	.012	.081	.041	.012	.079	.040	.012	
9.0	.083	.040	.011	.081	.040	.011	.079	.039	.011	.076	.038	.011	.074	.038	.011	
10.0	.078	.037	.010	.077	.037	.010	.074	.036	.010	.072	.036	.010	.070	.035	.010	

pcc	80%			70%			50%			30%			10%			0	
pw	50%	30%	10%	50%	30%	10%	50%	30%	10%	50%	30%	10%	50%	30%	10%	0	
pfc	20%			20%			20%			20%			20%			0	
RCR	RCR:Room Cavity Ratio						Ceiling Cavity Exitance Coefficients(CCEC)										
0.0	.093	.093	.093	.079	.079	.079	.054	.054	.054	.031	.031	.031	.010	.010	.010		
1.0	.087	.076	.066	.074	.065	.057	.051	.045	.040	.029	.026	.023	.009	.008	.007		
2.0	.083	.064	.049	.071	.055	.042	.049	.038	.029	.028	.022	.017	.009	.007	.006		
3.0	.079	.056	.037	.068	.048	.032	.046	.033	.023	.027	.019	.013	.009	.006	.004		
4.0	.075	.049	.029	.064	.042	.025	.044	.030	.018	.026	.017	.011	.008	.006	.003		
5.0	.071	.044	.024	.061	.038	.021	.042	.027	.015	.024	.016	.009	.008	.005	.003		
6.0	.068	.040	.020	.058	.034	.017	.040	.024	.012	.023	.014	.007	.008	.005	.002		
7.0	.065	.036	.017	.056	.032	.014	.039	.022	.010	.022	.013	.006	.007	.004	.002		
8.0	.062	.034	.014	.053	.029	.012	.037	.020	.009	.021	.012	.005	.007	.004	.002		
9.0	.059	.031	.013	.051	.027	.011	.035	.019	.008	.020	.011	.005	.007	.004	.002		
10.0	.056	.029	.011	.048	.025	.010	.034	.018	.007	.020	.011	.004	.006	.003	.001		

C Range: 0 - 360DEG  
C Interval: 30.0DEG  
Test Speed: HIGH  
Temperature:25.3℃  
Operators:zoe  
Test Date:2024-12-26

γ Range: 0 - 180DEG  
γ Interval: 1.0DEG  
Test System:EVERFINE GO-SPEX500\_V1 SYSTEM V2.00.461  
Humidity:65.0%  
Test Distance:3.160m [K=1.0000]  
Remarks: LAMP:HL-A-2835D90W-2-S1-08L-HR5 Ra:90  
DIFFUSER:PL-0101A+PM-0145A  
NOT DRIVER:48V  
30minutes warm-up

## UGR(Unified Glare Rating) Table

Test:U:47.997V I:0.1116A P:5.3565W PF:1.0000 Freq:0Hz Lamp Flux:823.228x1 lm										
NAME: OZ48-P2-3					TYPE:			WEIGHT:		
SPEC.: 3000K					DIM.:			SERIAL No.: 2412261526		
MFR.: RISE					SUR.: 0.004998m2			Shielding Angle:		
ceiling/cavity	0.7	0.7	0.5	0.5	0.3	0.7	0.7	0.5	0.5	0.3
walls	0.5	0.3	0.5	0.3	0.3	0.5	0.3	0.5	0.3	0.3
working plane	0.2	0.2	0.2	0.2	0.2	0.2	0.2	0.2	0.2	0.2
Room dimensions	Viewed crosswise					Viewed endwise				
x = 2H y = 2H	24.9	26.3	25.1	26.5	26.7	23.9	25.3	24.1	25.5	25.7
3H	26.3	27.7	26.6	27.9	28.1	24.9	26.3	25.2	26.5	26.7
4H	26.9	28.1	27.2	28.4	28.6	25.2	26.5	25.5	26.7	27.0
6H	27.2	28.4	27.5	28.7	29.0	25.3	26.5	25.6	26.8	27.0
8H	27.3	28.4	27.6	28.7	29.0	25.3	26.4	25.6	26.7	27.0
12H	27.3	28.4	27.7	28.7	29.0	25.2	26.3	25.6	26.6	26.9
4H 2H	25.3	26.6	25.6	26.8	27.1	24.5	25.8	24.8	26.0	26.3
3H	26.9	28.0	27.3	28.3	28.6	25.7	26.8	26.0	27.1	27.4
4H	27.6	28.6	27.9	28.9	29.2	26.1	27.1	26.4	27.4	27.7
6H	28.0	28.9	28.4	29.2	29.6	26.2	27.1	26.6	27.4	27.8
8H	28.1	29.0	28.5	29.3	29.7	26.2	27.0	26.6	27.4	27.8
12H	28.2	28.9	28.6	29.3	29.7	26.1	26.9	26.6	27.3	27.7
8H 4H	27.7	28.5	28.1	28.9	29.2	26.3	27.1	26.7	27.5	27.9
6H	28.2	28.9	28.6	29.3	29.7	26.5	27.2	26.9	27.6	28.0
8H	28.3	29.0	28.8	29.4	29.8	26.5	27.1	26.9	27.5	28.0
12H	28.4	29.0	28.9	29.4	29.9	26.5	27.0	26.9	27.4	27.9
12H 4H	27.6	28.4	28.0	28.8	29.2	26.3	27.0	26.7	27.4	27.8
6H	28.2	28.8	28.6	29.2	29.7	26.5	27.1	27.0	27.5	28.0
8H	28.3	28.9	28.8	29.3	29.8	26.5	27.0	27.0	27.5	28.0
Variations with the observer position at spacings(CIE Pub.117):										
S = 1.0H	+ 0.2 / - 0.2					+ 0.3 / - 0.4				
1.5H	+ 0.1 / - 0.2					+ 0.2 / - 0.4				
2.0H	+ 0.3 / - 0.4					+ 0.4 / - 0.5				

CIE Pub.117, 823.2 lm Total Lamp Luminous Flux Correct (8log(F/F0) = -0.7)  
Area: 0.004998 m2

C Range: 0 - 360DEG  
C Interval: 30.0DEG  
Test Speed: HIGH  
Temperature:25.3℃  
Operators:zoe  
Test Date:2024-12-26

γ Range: 0 - 180DEG  
γ Interval: 1.0DEG  
Test System:EVERFINE GO-SPEX500\_V1 SYSTEM V2.00.461  
Humidity:65.0%  
Test Distance:3.160m [K=1.0000]  
Remarks: LAMP:HL-A-2835D90W-2-S1-08L-HR5 Ra:90  
DIFFUSER:PL-0101A+PM-0145A  
NOT DRIVER:48V  
30minutes warm-up



### UTILIZATION FACTORS TABLE

Test:U:47.997V I:0.1116A P:5.3565W PF:1.0000 Freq:0Hz Lamp Flux:823.228x1 lm		
NAME: OZ48-P2-3	TYPE:	WEIGHT:
SPEC.: 3000K	DIM.:	SERIAL No.: 2412261526
MFR.: RISE	SUR.: 0.004998m2	Shielding Angle:

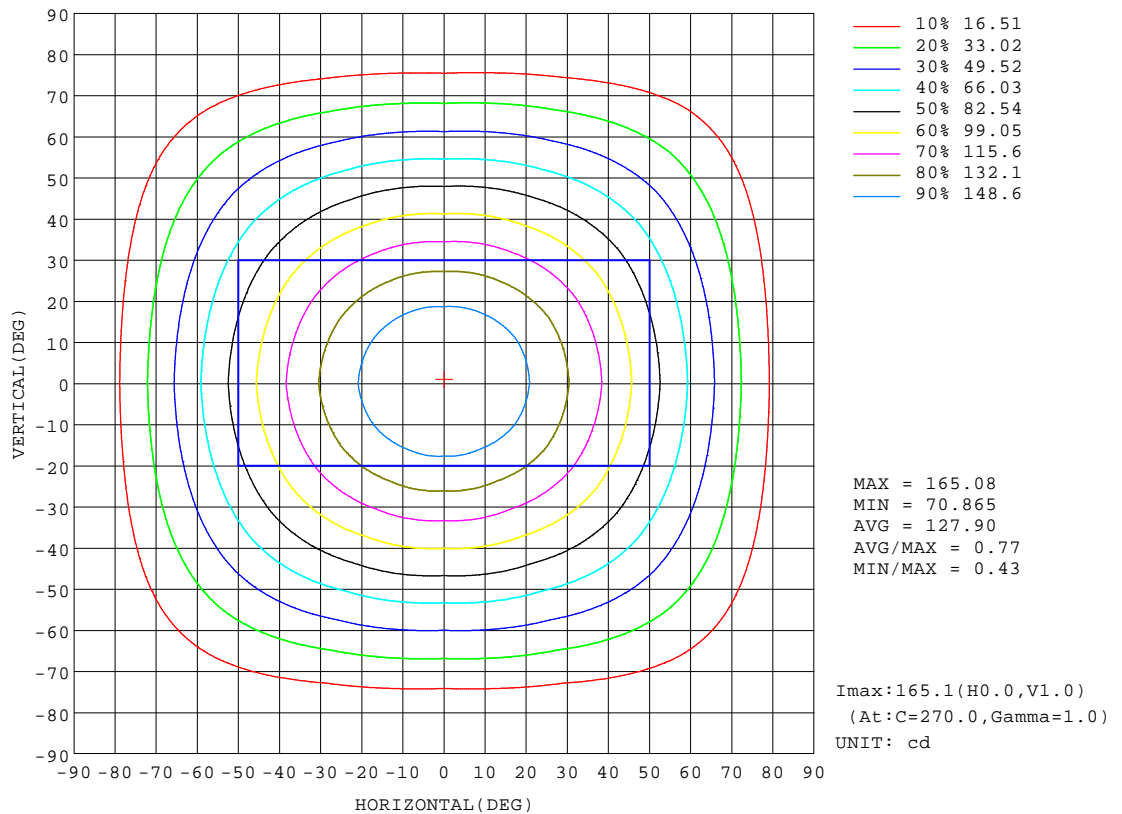
REFLECTANCE										
Ceiling	0.8	0.8	0.8	0.7	0.7	0.7	0.5	0.5	0.5	0
Walls	0.7	0.5	0.3	0.7	0.5	0.3	0.7	0.5	0.3	0
Working plane	0.2	0.2	0.2	0.2	0.2	0.2	0.2	0.2	0.2	0
ROOM INDEX	UTILIZATION FACTORS(PERCENT) $k(RI) \times RCR = 5$									
k = 0.60	29	24	21	29	24	20	28	23	20	17
0.80	34	29	25	34	29	25	33	28	25	22
1.00	38	33	30	38	33	30	37	33	29	26
1.25	42	37	33	41	36	33	40	36	33	30
1.50	44	39	36	43	39	36	42	38	35	32
2.00	47	43	40	46	43	40	45	42	39	36
2.50	49	45	43	48	45	42	46	43	41	37
3.00	50	47	45	49	47	44	48	45	43	39
4.00	52	50	48	51	49	47	49	47	46	42
5.00	53	51	49	52	50	49	50	49	47	43
ROOM INDEX	UF(total)									Direct
According to DIN EN 13032-2 2004			Suspended					SHRNOM = 1.25		

C Range: 0 - 360DEG  
C Interval: 30.0DEG  
Test Speed: HIGH  
Temperature:25.3℃  
Operators:zoe  
Test Date:2024-12-26

γ Range: 0 - 180DEG  
γ Interval: 1.0DEG  
Test System:EVERFINE GO-SPEX500\_V1 SYSTEM V2.00.461  
Humidity:65.0%  
Test Distance:3.160m [K=1.0000]  
Remarks: LAMP:HL-A-2835D90W-2-S1-08L-HR5 Ra:90  
DIFFUSER:PL-0101A+PM-0145A  
NOT DRIVER:48V  
30minutes warm-up

## ISOCANDELA DIAGRAM

Test:U:47.997V I:0.1116A P:5.3565W PF:1.0000 Freq:0Hz Lamp Flux:823.228x1 lm		
NAME: OZ48-P2-3	TYPE:	WEIGHT:
SPEC.: 3000K	DIM.:	SERIAL No.: 2412261526
MFR.: RISE	SUR.: 0.004998m2	Shielding Angle:

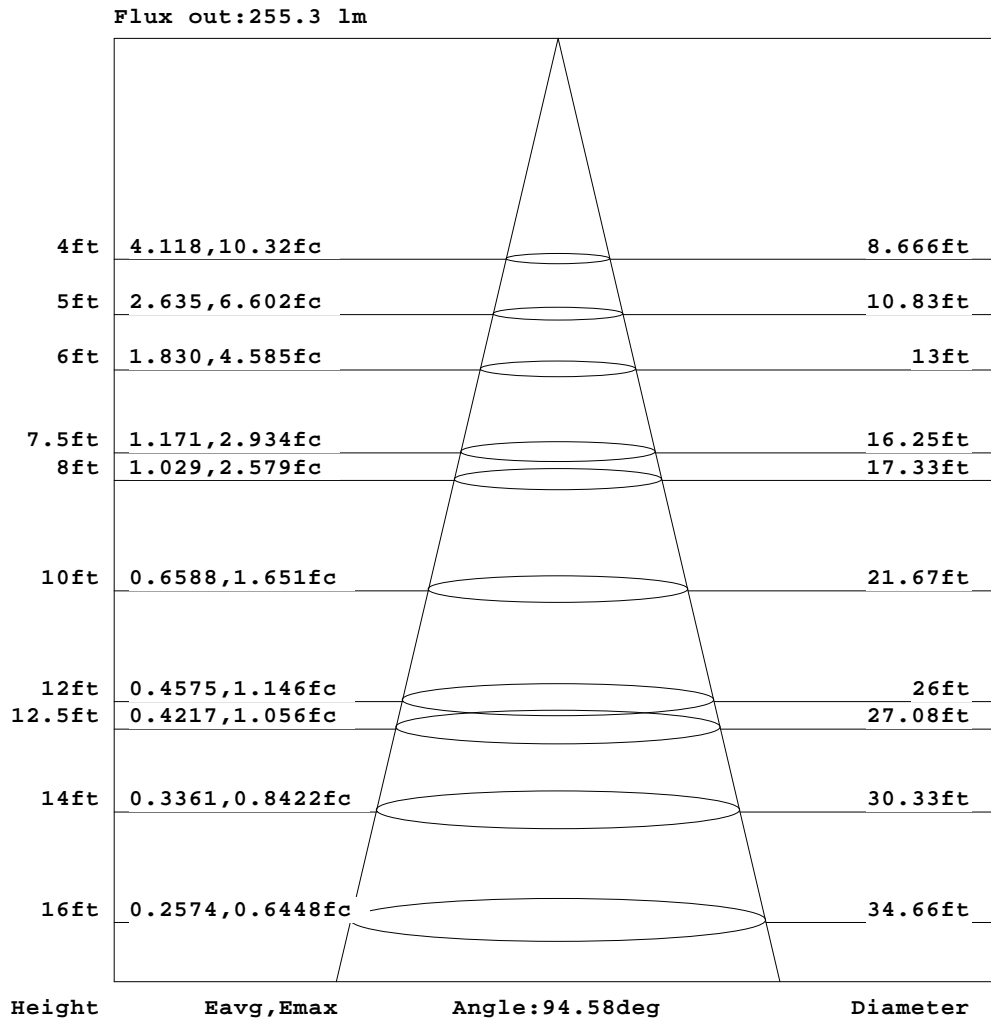


C Range: 0 - 360DEG  
C Interval: 30.0DEG  
Test Speed: HIGH  
Temperature:25.3℃  
Operators:zoe  
Test Date:2024-12-26

γ Range: 0 - 180DEG  
γ Interval: 1.0DEG  
Test System:EVERFINE GO-SPEX500\_V1 SYSTEM V2.00.461  
Humidity:65.0%  
Test Distance:3.160m [K=1.0000]  
Remarks: LAMP:HL-A-2835D90W-2-S1-08L-HR5 Ra:90  
DIFFUSER:PL-0101A+PM-0145A  
NOT DRIVER:48V  
30minutes warm-up

## AAI Figure

Test:U:47.997V I:0.1116A P:5.3565W PF:1.0000 Freq:0Hz Lamp Flux:823.228x1 lm		
NAME: OZ48-P2-3	TYPE:	WEIGHT:
SPEC.: 3000K	DIM.:	SERIAL No.: 2412261526
MFR.: RISE	SUR.: 0.004998m2	Shielding Angle:



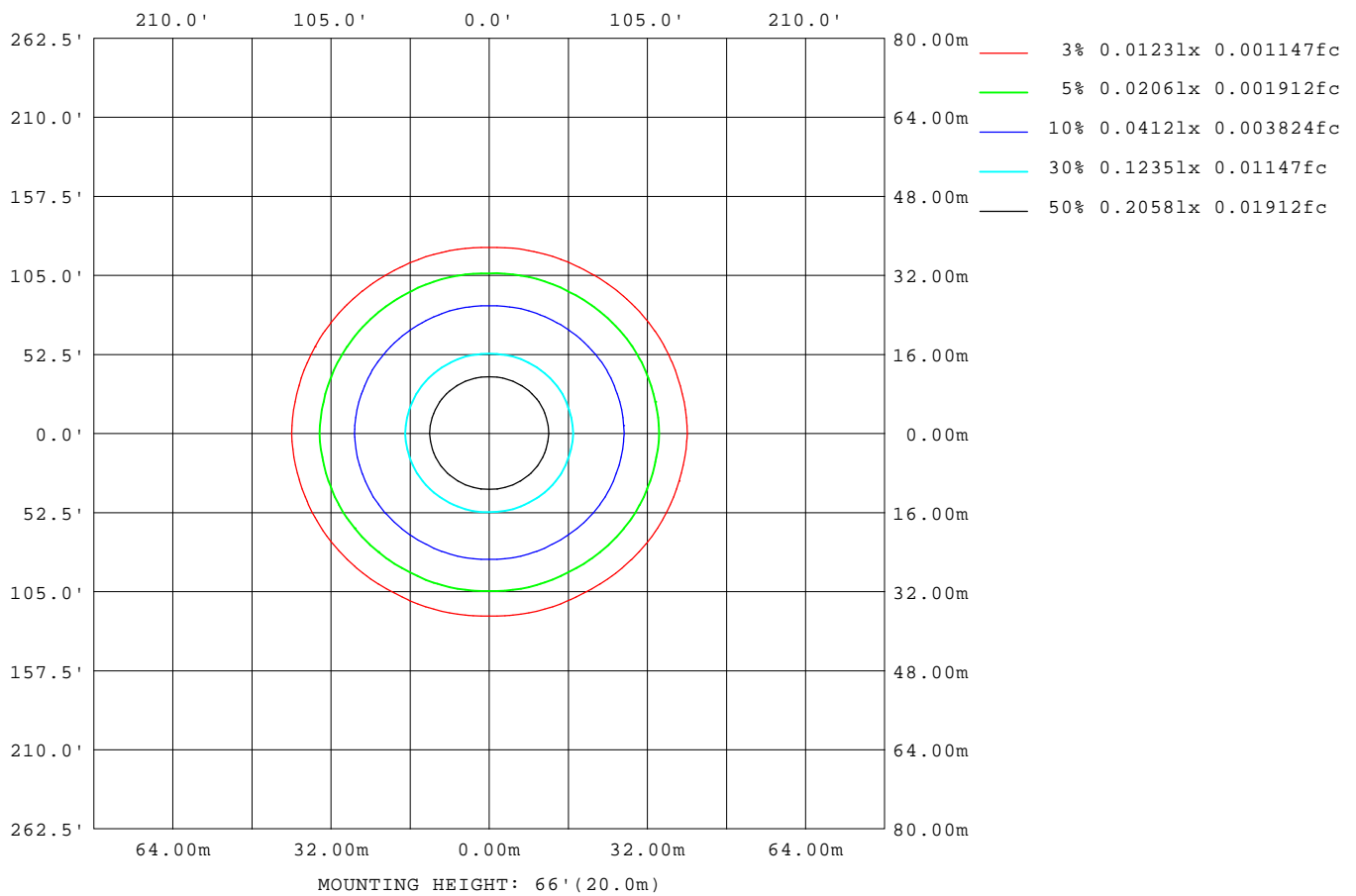
Note:The Curves indicate the illuminated area and the average illumination when the luminaire is at different distance.

C Range: 0 - 360DEG  
C Interval: 30.0DEG  
Test Speed: HIGH  
Temperature:25.3℃  
Operators:zoe  
Test Date:2024-12-26

γ Range: 0 - 180DEG  
γ Interval: 1.0DEG  
Test System:EVERFINE GO-SPEX500\_V1 SYSTEM V2.00.461  
Humidity:65.0%  
Test Distance:3.160m [K=1.0000]  
Remarks: LAMP:HL-A-2835D90W-2-S1-08L-HR5 Ra:90  
DIFFUSER:PL-0101A+PM-0145A  
NOT DRIVER:48V  
30minutes warm-up

## ISOLUX DIAGRAM

Test:U:47.997V I:0.1116A P:5.3565W PF:1.0000 Freq:0Hz Lamp Flux:823.228x1 lm		
NAME: OZ48-P2-3	TYPE:	WEIGHT:
SPEC.: 3000K	DIM.:	SERIAL No.: 2412261526
MFR.: RISE	SUR.: 0.004998m2	Shielding Angle:



C Range: 0 - 360DEG  
C Interval: 30.0DEG  
Test Speed: HIGH  
Temperature:25.3℃  
Operators:zoe  
Test Date:2024-12-26

γ Range: 0 - 180DEG  
γ Interval: 1.0DEG  
Test System:EVERFINE GO-SPEX500\_V1 SYSTEM V2.00.461  
Humidity:65.0%  
Test Distance:3.160m [K=1.0000]  
Remarks: LAMP:HL-A-2835D90W-2-S1-08L-HR5 Ra:90  
DIFFUSER:PL-0101A+PM-0145A  
NOT DRIVER:48V  
30minutes warm-up

### LED Avg.L Report

Test:U:47.997V I:0.1116A P:5.3565W PF:1.0000 Freq:0Hz Lamp Flux:823.228x1 lm		
NAME: OZ48-P2-3	TYPE:	WEIGHT:
SPEC.: 3000K	DIM.:	SERIAL No.: 2412261526
MFR.: RISE	SUR.: 0.004998m2	Shielding Angle:

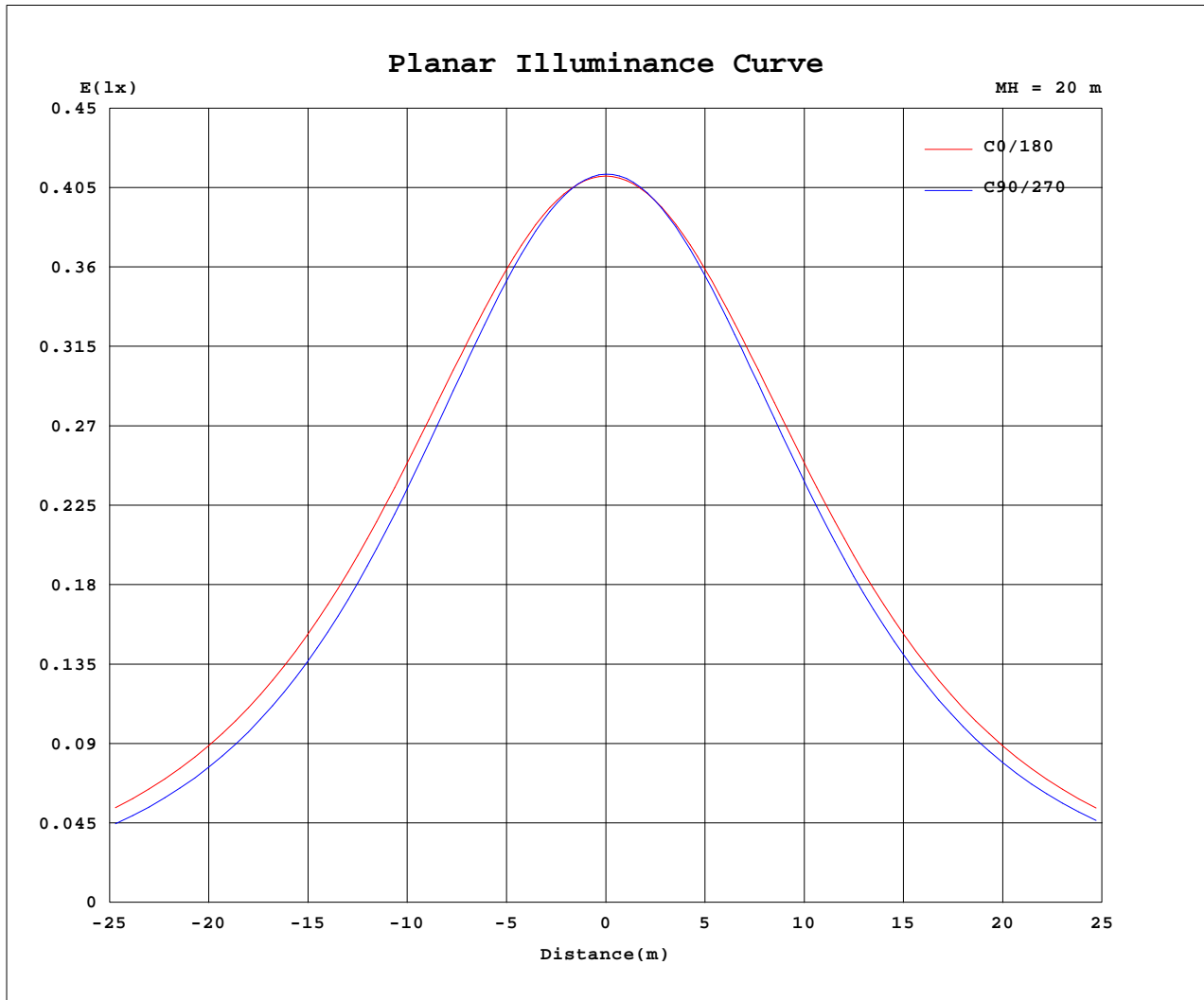
AvgL	cd/m2
L_0~180(65)av	24354
L_0~180(75)av	20216
L_0~180(85)av	10698
L_90~270(65)av	18404
L_90~270(75)av	12430
L_90~270(85)av	1170
L_45(65)av	21004
L_45(75)av	15652
L_45(85)av	3912

Standard: GB/T 29293-2012

C Range: 0 - 360DEG  
C Interval: 30.0DEG  
Test Speed: HIGH  
Temperature:25.3℃  
Operators:zoe  
Test Date:2024-12-26

γ Range: 0 - 180DEG  
γ Interval: 1.0DEG  
Test System:EVERFINE GO-SPEX500\_V1 SYSTEM V2.00.461  
Humidity:65.0%  
Test Distance:3.160m [K=1.0000]  
Remarks: LAMP:HL-A-2835D90W-2-S1-08L-HR5 Ra:90  
DIFFUSER:PL-0101A+PM-0145A  
NOT DRIVER:48V  
30minutes warm-up

## Planar Illuminance Curve



C Range: 0 - 360DEG  
 C Interval: 30.0DEG  
 Test Speed: HIGH  
 Temperature: 25.3 °C  
 Operators: zoe  
 Test Date: 2024-12-26

γ Range: 0 - 180DEG  
 γ Interval: 1.0DEG  
 Test System: EVERFINE GO-SPEX500\_V1 SYSTEM V2.00.461  
 Humidity: 65.0%  
 Test Distance: 3.160m [K=1.0000]  
 Remarks: LAMP: HL-A-2835D90W-2-S1-08L-HR5 Ra:90  
 DIFFUSER: PL-0101A+PM-0145A  
 NOT DRIVER: 48V  
 30minutes warm-up



## LUMINOUS DISTRIBUTION INTENSITY DATA

Test:U:47.997V I:0.1116A P:5.3565W PF:1.0000 Freq:0Hz  
Lamp Flux:823.228x1 lm

NAME: OZ48-P2-3	TYPE:	WEIGHT:
SPEC.: 3000K	DIM.:	SERIAL No.: 2412261526
MFR.: RISE	SUR.: 0.004998m2	Shielding Angle:

Table--1

UNIT: cd

C(DEG) γ (DEG)	0	30	60	90	120	150	180	210	240	270	300	330						
0	165	165	165	165	165	165	165	165	165	165	165	165						
5	164	164	163	163	163	164	164	164	164	164	164	164						
10	161	161	159	159	159	160	161	161	161	160	161	161						
15	156	155	153	153	153	155	156	156	155	154	155	156						
20	150	148	145	144	145	148	150	149	147	146	147	149						
25	142	140	136	134	136	140	142	141	138	137	138	141						
30	133	130	125	123	125	130	133	131	128	126	128	132						
35	123	120	114	111	114	119	123	121	116	114	117	121						
40	112	108	102	99.2	102	108	112	109	105	102	105	110						
45	101	96.4	89.4	86.7	89.5	96.2	101	97.6	92.4	89.7	92.7	98.4						
50	88.9	84.3	76.9	74.2	77.0	84.0	88.7	85.4	80.0	77.2	80.4	86.3						
55	76.7	71.9	64.5	61.8	64.5	71.5	76.5	73.0	67.5	64.8	68.0	74.0						
60	64.3	59.4	52.1	49.5	52.1	59.0	63.9	60.5	55.1	52.5	55.6	61.5						
65	51.7	46.8	39.8	37.4	39.8	46.3	51.2	47.8	42.8	40.4	43.3	48.9						
70	39.0	34.4	27.9	25.7	27.8	33.8	38.4	35.2	30.7	28.6	31.2	36.4						
75	26.4	22.2	16.6	14.8	16.5	21.6	25.9	22.9	19.2	17.4	19.7	24.1						
80	14.6	11.0	6.97	5.61	6.89	10.4	14.0	11.6	8.69	7.45	9.17	12.6						
85	4.92	2.59	0.79	0.48	0.74	2.26	4.40	2.68	0.85	0.54	1.05	3.46						
90	0.00	0.00	0.00	0.00	0.00	0.00	0.00	0.00	0.00	0.00	0.00	0.00						
95	0.00	0.00	0.00	0.00	0.00	0.00	0.00	0.00	0.00	0.00	0.00	0.00						
100	0.00	0.00	0.00	0.00	0.00	0.00	0.00	0.00	0.00	0.00	0.00	0.00						
105	0.00	0.00	0.00	0.00	0.00	0.00	0.00	0.00	0.00	0.00	0.00	0.00						
110	0.00	0.00	0.00	0.00	0.00	0.00	0.00	0.00	0.00	0.00	0.00	0.00						
115	0.00	0.00	0.00	0.00	0.00	0.00	0.00	0.00	0.00	0.00	0.00	0.00						
120	0.00	0.00	0.00	0.00	0.00	0.00	0.00	0.00	0.00	0.00	0.00	0.00						
125	0.00	0.00	0.00	0.00	0.00	0.00	0.00	0.00	0.00	0.00	0.00	0.00						
130	0.00	0.00	0.00	0.00	0.00	0.00	0.00	0.00	0.00	0.00	0.00	0.00						
135	0.00	0.00	0.00	0.00	0.00	0.00	0.00	0.00	0.00	0.00	0.00	0.00						
140	0.00	0.00	0.00	0.00	0.00	0.00	0.00	0.00	0.00	0.00	0.00	0.00						
145	0.00	0.00	0.00	0.00	0.00	0.00	0.00	0.00	0.00	0.00	0.00	0.00						
150	0.00	0.00	0.00	0.00	0.00	0.00	0.00	0.00	0.00	0.00	0.00	0.00						
155	0.00	0.00	0.00	0.00	0.00	0.00	0.00	0.00	0.00	0.00	0.00	0.00						
160	0.00	0.00	0.00	0.00	0.00	0.00	0.00	0.00	0.00	0.00	0.00	0.00						
165	0.00	0.00	0.00	0.00	0.00	0.00	0.00	0.00	0.00	0.00	0.00	0.00						
170	0.00	0.00	0.00	0.00	0.00	0.00	0.00	0.00	0.00	0.00	0.00	0.00						
175	0.00	0.00	0.00	0.00	0.00	0.00	0.00	0.00	0.00	0.00	0.00	0.00						
180	0.00	0.00	0.00	0.00	0.00	0.00	0.00	0.00	0.00	0.00	0.00	0.00						

C Range: 0 - 360DEG  
C Interval: 30.0DEG  
Test Speed: HIGH  
Temperature:25.3℃  
Operators:zoe  
Test Date:2024-12-26

γ Range: 0 - 180DEG  
γ Interval: 1.0DEG  
Test System:EVERFINE GO-SPEX500\_V1 SYSTEM V2.00.461  
Humidity:65.0%  
Test Distance:3.160m [K=1.0000]  
Remarks: LAMP:HL-A-2835D90W-2-S1-08L-HR5 Ra:90  
DIFFUSER:PL-0101A+PM-0145A  
NOT DRIVER:48V  
30minutes warm-up